

Shiksha Mandal's

# Bajaj College of Science, Wardha

(Formerly known as Jankidevi Bajaj College of Science)

4<sup>th</sup> Cycle: Assessment and Accreditation by NAAC



## Criterion VI

### Governance, Leadership and Management

#### QIM 6.1.2

The effective leadership is reflected in various institutional practices such as decentralization and participative management



# Bajaj College of Science, Wardha

(Formerly known as Jankidevi Bajaj College of Science)  
An Autonomous College affiliated to RTM Nagpur University, Nagpur  
NAAC Reaccredited 'A' with CGPA of 3.21  
(A Linguistic Minority College)



**Prof. Pradip. V. Tekade**  
Principal (Offg.)


Email : jbsciencewardha@yahoo.co.in  
pradiptekade@gmail.com

Ref. No. BCS/ /20 -20


Date : 27 DEC 2022

## DECLARATION

This is to declare that the information and data furnished as supporting/additional document in the metric 6.1.2 *The effective leadership is reflected in various institutional practices such as decentralization and participative management* are true to the best of my knowledge and is verified by IQAC.

  
Dr. M. R. Chandrakar  
IQAC Co-ordinator



  
Prof. P. V. Tekade  
Principal (Offg.)  
Offi. Principal  
Bajaj College of Science  
WARDHA

**Shiksha Mandal's  
Bajaj College of Science, Wardha**

**Strategic Plan and Deployment document (2017-2025)**

**Summary:**

At Bajaj College of Science, planning is a continuous process which focuses to accomplish vision and mission of the college. This is achieved by setting short term goals and long term goals.

These goals are achieved by involving the stakeholders in level of hierarchies - Management, Principal, HODs, faculties, non teaching staff, students, alumni, parents. All stakeholders are involved in formulating and executing these goals.

**Vision:**

To contribute in building a new India through well educated, socially conscious students with good values and make such education accessible to students of this region.

This is the reason our parent organization Shiksha Mandal came into being in 1914. Its credo "A century of nationalistic, value based, quality education" expresses this vision.

**Mission:**

- To promote academic growth of students by running excellent graduate, post graduate and doctoral programs in Science.
- To develop human potential to its fullest extent and inculcate sound human values in students.

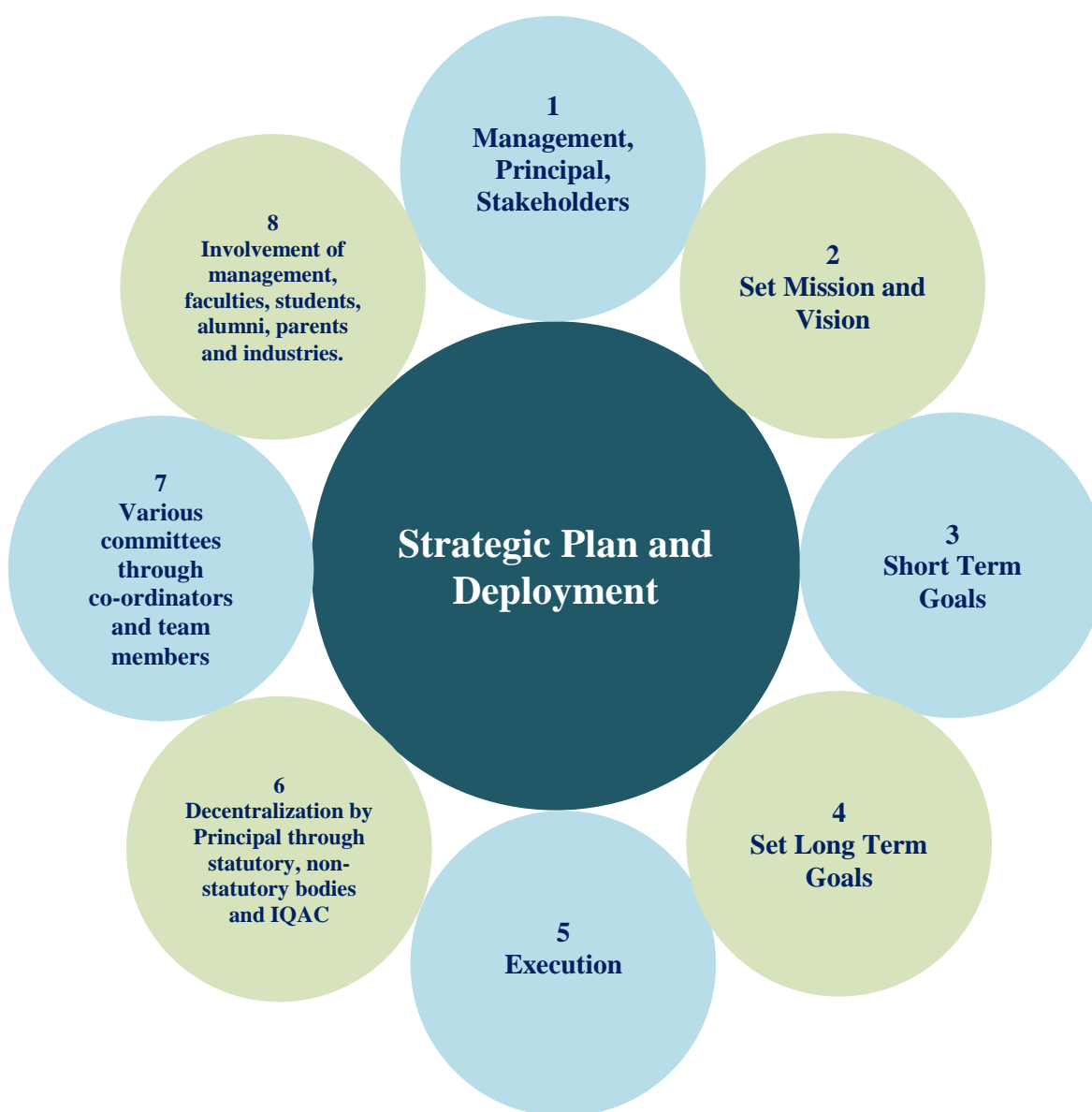
**Short Term Goal (Target period of five years):**

- To provide better learning atmosphere and to enhance higher learning facilities, emphasis would be given to infrastructure development in the following areas - Library building expansion, Girl's hostel expansion, Chemistry and Physics Laboratory Renovation, Central Computer facility, ICT Laboratory, Central Instrumentation Centre, ICT Enabled Classroom, Classroom Expansion.
- Introduction of new Programs.
- Commencement of skill oriented certificate courses.
- Strengthening of training and placement cell.
- Collaborations with industries and research laboratories / other higher education institutions.
- Setting up a competitive examination cell.
- Online admission process.
- Automation/digitalization in administration, finance, library.
- Use and promotion of non-conventional energy sources.

**Long Term Goal:**

- To start more doctoral programmes (Ph.D.).
- Implementation of multidisciplinary research approach.
- Bajaj College of Science, Wardha acquired academic autonomy in 2017. As a next step the Shiksha Mandal is exploring the possibilities of forming a cluster university with BCS as nodal college.
- To initiate steps to implement National Education Policy (2020).

## Strategic plan execution:



**IQAC:**

- Constitution.
- Framing policy and publishing.
- Decentralization through various committee formation.
- Periodic check of quality and graph.
- Annual report preparation and submission.

**Teaching learning and evaluation process:**

In higher education institute, teaching learning and evaluation is the heart of the system. Respective departmental Heads and faculty take care of Teaching and Learning process. It is approved through Board of Studies, Academic Council and Governing Body.

- Academic calendar is framed.
- Syllabus is framed as per the need of students; focusing vision and mission of college.
- Teaching plan as per CO and PO.
- Use of ICT for effective Teaching-Learning process.
- Promote research and projects.
- Conduct training programmes as per need.
- Incorporate feedback system.
- Continuous assessment.
- Focusing on best practices.

**Curricular Aspects:**

Curricular aspects are planned by head of departments and faculties, are passed in respective Board of Studies. These are later on approved by Academic Council and Governing Body. Care is taken that students should gain knowledge of respective subjects opted as well as should be able to compete in the competitive world. Accordingly students are groomed via competitive examination cell and training and placement cell which is decentralized and headed by the coordinators of the committee.

**Research, Consultancy and extension:**

- Collaboration with other research/institution groups.
- Dedicated central instrumentation laboratory where sophisticated instruments are made available for research projects and consultancy.
- Faculties and research scholars are continuously boosted for research and publications.
- All the laboratories are well equipped with state of art instruments.
- In addition to Central library, departmental library exists at PG departments.
- Through NSS, NCC, CWSS, PEC societal / extension activities are performed. Some of the UG and PG projects are also given in such a manner that students get aware about societal problems.
- Awareness programme are organized by NSS and other departments of the institute.

**Infrastructure and learning resources:**

- Institute is having good infrastructure with enough ICT enabled classrooms and laboratories , Library and sports department.
- Construction of new building is permitted as per the need.
- ICT lab, language lab, Central instrumentation laboratory are the prime highlights of the institute.
- Indoor/outdoor sports facility.

- Hostel facility.
- Water facility.
- Solar energy is being used and additional power is wheeling to grid.

#### **Student support and progression:**

- Student representation on various committee.
- In PG departments societies are formed students are the members and organize various activities under this banner.
- Students are encouraged and prepared to appear for various competition.
- Training and placement cell promote students for campus drives.
- Rewards and recognitions of achiever.
- Participation in co-curricular and extra curricular activities.
- Financial assistance via scholarships.
- Skill enhancement courses to promote entrepreneurship.

#### **Governance, Leadership and Management:**

- The activities of the college are well planned by Principal and are executed via teachers, staff and students, Parents and all the stake holders of the college.
- Plans are approved by Board of Studies, Academic Council, Academic Council, Governing Body and College Development Council.
- Decentralized working via various committees.
- Timely audit of activities to achieve vision and mission of the institute.

#### **Strategy implementation and monitoring:**

All activities are planned and then passed through College Development Committee, Board of Studies, Academic Council, Finance Committee, Governing Body for the implementation. It is done by decentralizing via various committees and coordinators.

- Governance and administration - Management, Principal, office superintendent.
- Statutory bodies – as per the UGC norms where Principal is the Chairman of the committee.
- Non-statutory bodies – Principal through committee coordinators and team.
- Teaching and learning–Head of the departments, faculties, alumni, industry.
- Research–Research cell.
- Training and placement – training and placement committee.

The working is monitored throughout year and focuses to achieve goals and Vision and mission of the institute.